



272 ACRES FM 1660

TAYLOR, TX 76574

EXCLUSIVELY LISTED BY
JOSH SMITH, ASSOCIATE BROKER
TRIPLE L REALTY GROUP - KW

512.394.2659

JSMITH@TRIPLELREALTY.COM

WWW.TRIPLELREALTY.COM



272 Acres FM 1660, Taylor TX

Property Details



Subject Property 272 Acres

FM 1660

FM 973 N

Asking Price:
\$30,000,000 or \$110,000/Acre

A 272.62-acre tract positioned for scale, frontage, and future development — with natural features that enhance its subdivision potential.

- 272.62 acres, Williamson County
- 2,068+ feet FM 1660 frontage
- No FEMA floodplain
- Level topography, suitable for development
- Opportunity Zone
- No zoning
- Restricted to Residential Development
- Manville Water service
- Taylor ISD, Taylor ETJ

Contact For More Information:
Josh Smith (512) 394-2659
jsmith@triplelrealty.com

Triple L Realty - Keller Williams
333 US 290, #300
Dripping Springs, TX 78620

272 Acres FM 1660, Taylor TX



Contact For More Information:
Josh Smith (512) 394-2659
jsmith@triplelrealty.com

Triple L Realty - Keller Williams
333 US 290, #300
Dripping Springs, TX 78620

272 Acres FM 1660, Taylor TX



SAMSUNG



Contact For More Information:
Josh Smith (512) 394-2659
jsmith@triplelrealty.com

Triple L Realty - Keller Williams
333 US 290, #300
Dripping Springs, TX 78620

272 Acres FM 1660, Taylor TX

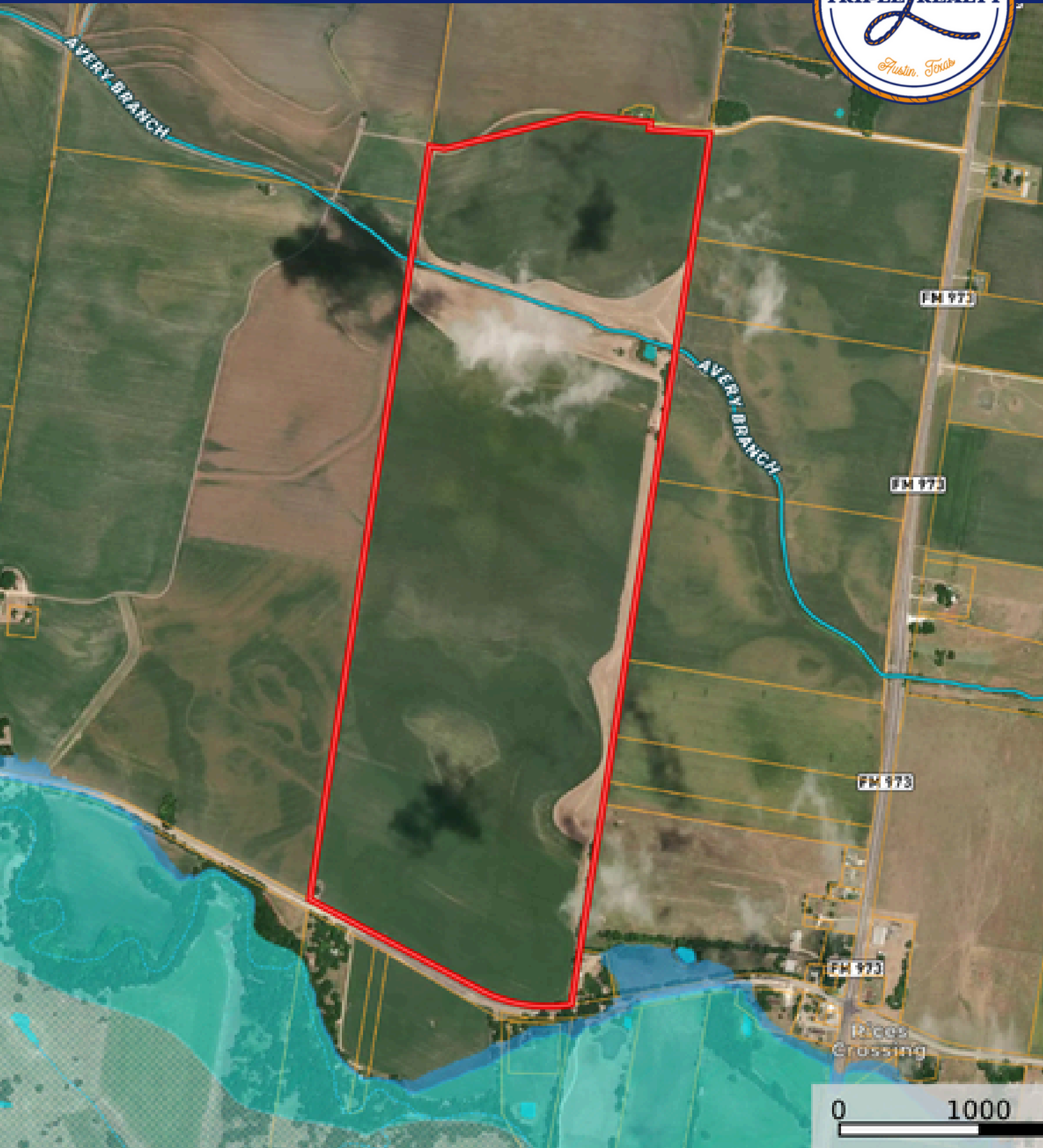


Contact For More Information:
Josh Smith (512) 394-2659
jsmith@triplelrealty.com

Triple L Realty - Keller Williams
333 US 290, #300
Dripping Springs, TX 78620

272 Acres FM 1660, Taylor TX

Land ID Map

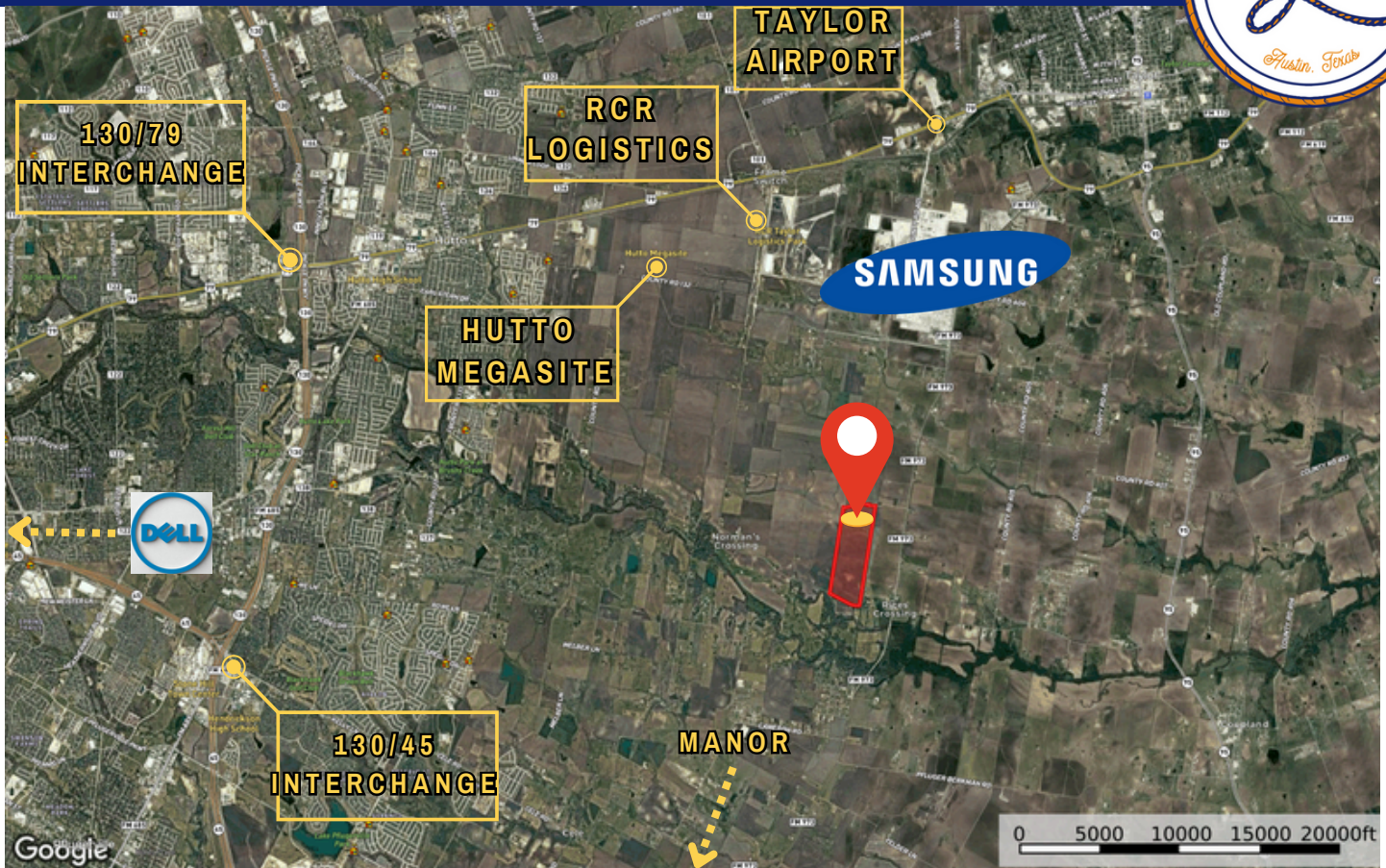


Contact For More Information:
Josh Smith (512) 394-2659
jsmith@triplelrealty.com

Triple L Realty - Keller Williams
333 US 290, #300
Dripping Springs, TX 78620

272 Acres FM 1660, Taylor TX

Location and Growth



This property is positioned in the direct path of Williamson County's most transformative growth.

Located just minutes from Samsung Semiconductor, RCR Taylor Rail Park, the Hutto Megasite, and TX-130, the Hairston Tract is surrounded by rapid industrial, commercial, and residential expansion. The corridor between Manor and Taylor has become one of the most sought-after development zones in Central Texas.

- 5 min (4.4 mi) Samsung Semiconductor Plant
- 9 min (6.4 mi) RCR Rail Logistics Park
- 11 min (8.9 mi) Hutto Megasite
- 9 min (7.7 mi) Taylor Airport
- 10 min (7.4 mi) Hutto
- 11 min (8.5 mi) TX 130 Toll Road
- 20 min (13.6 mi) Pflugerville
- 17 min (13.4 mi) Round Rock
- 21 min (15.8 MI) Dell Round Rock campus
- 13 min (11.3 mi) Manor

Contact For More Information:
Josh Smith (512) 394-2659
jsmith@triplelrealty.com

Triple L Realty - Keller Williams
333 US 290, #300
Dripping Springs, TX 78620

272 Acres FM 1660, Taylor TX

Area Development



Subdivisions & Future Developments

Builders are already here — growth in Hutto, Taylor, and Pflugerville is driving demand for land like yours.

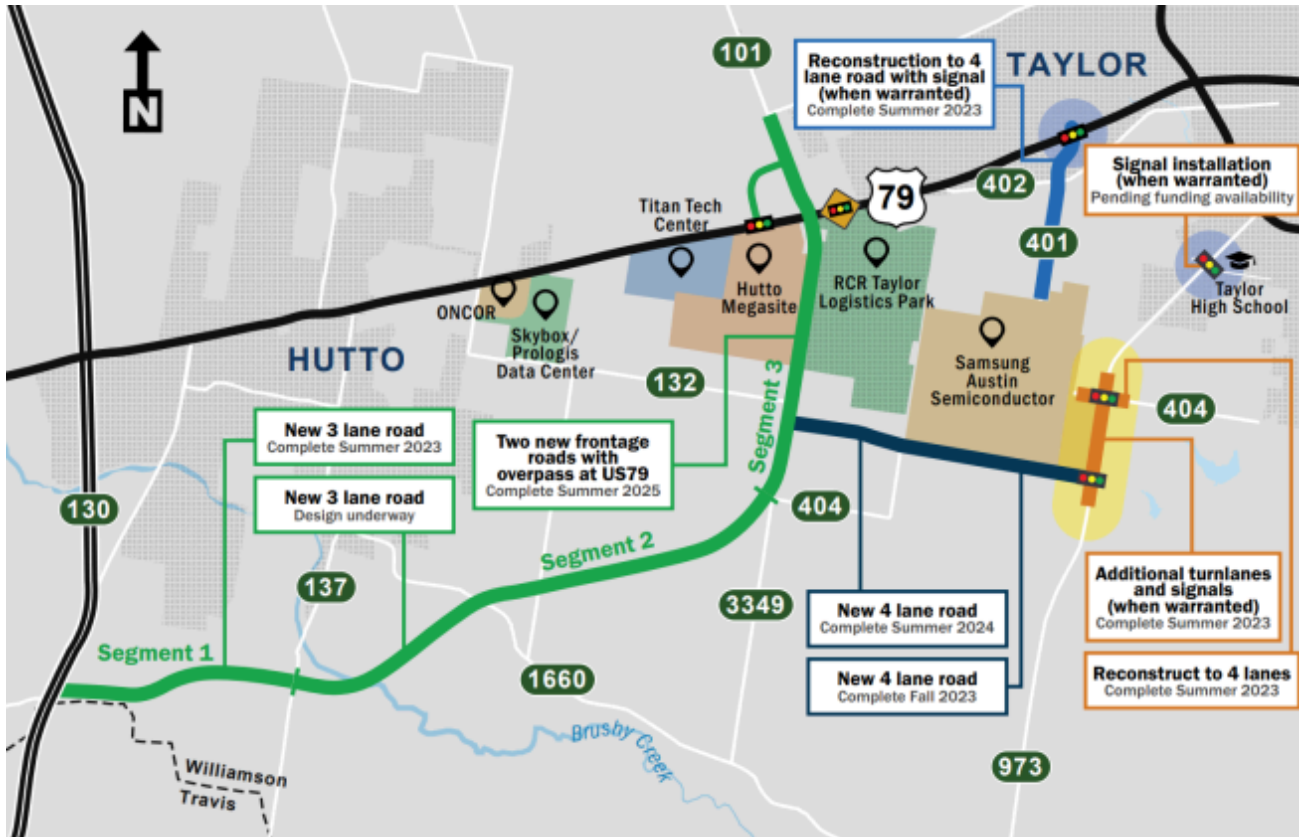
The eastern Williamson County corridor is surging with residential and mixed-use development. In Taylor, over 200 active new-home communities are underway, with entry-level pricing around \$209K and averages near \$359K. Hutto is delivering master-planned neighborhoods such as Firefly Pointe, Rolling Glen, and Cotton Brook. Eastern Pflugerville has committed \$9.2M to a wastewater interceptor to support new growth. Major mixed-use initiatives include the 112-acre Limmer Square and the 257-acre Gateway at Hutto, a master-planned project combining residential, multifamily, retail, office, and open space.

Infrastructure & Growth Drivers

Future Roadways

TxDOT, Williamson County, and local cities are expanding FM 973 into a freeway from Hwy 290 in Manor to the Samsung Highway in Taylor, then widening it into a six-lane arterial north to Hwy 79. SH 95 is expected to be upgraded into a freeway, creating another high-speed connection through Taylor. Other projects include the Hutto Arterial expansion, Chandler Road improvements, and Southwest Taylor mobility projects. These upgrades ensure the Manor-Taylor corridor becomes one of the most connected development zones in Central Texas.

272 Acres FM 1660, Taylor TX Area Development

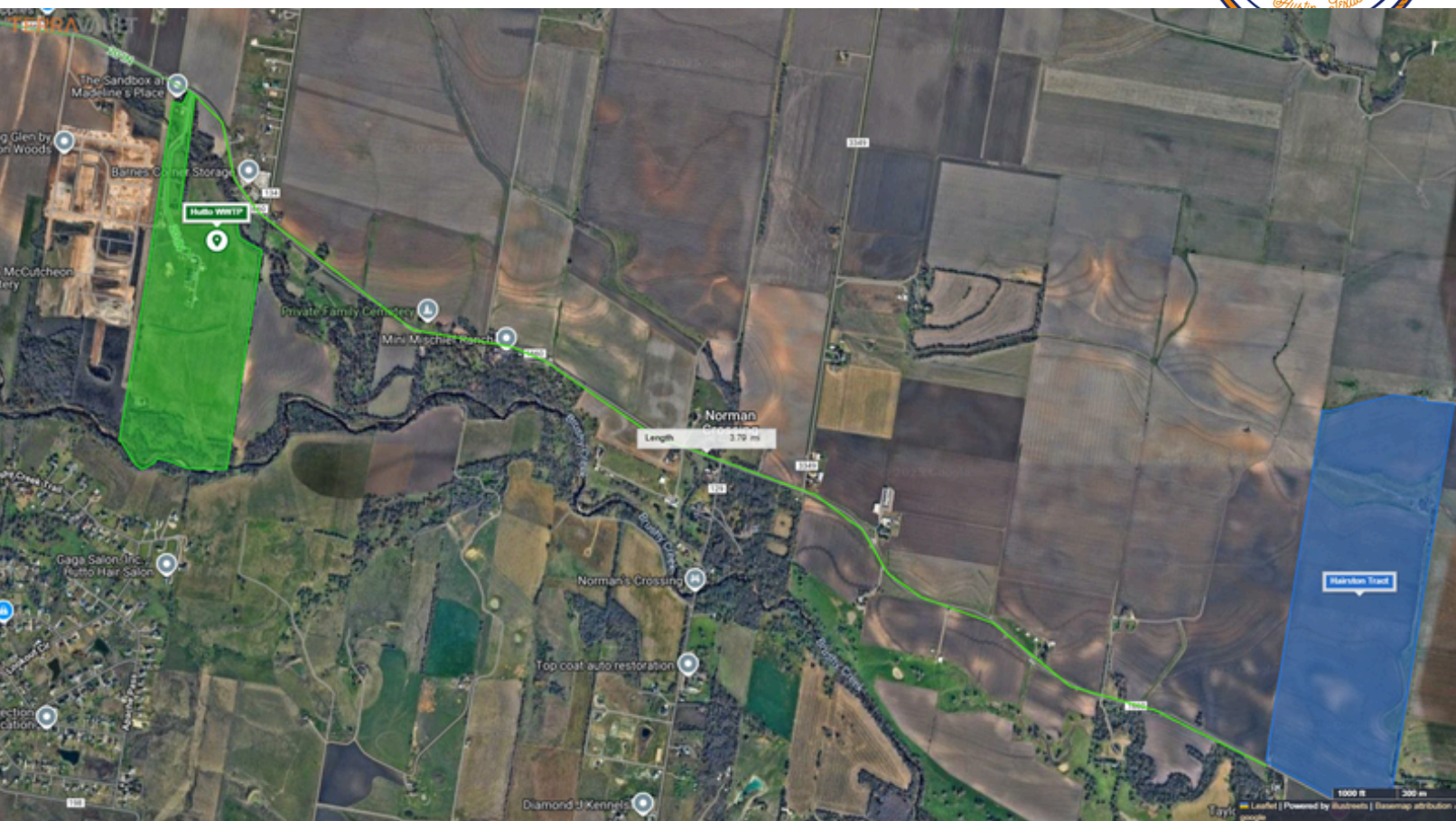


Contact For More Information:
Josh Smith (512) 394-2659
jsmith@triplelrealty.com

Triple L Realty - Keller Williams
333 US 290, #300
Dripping Springs, TX 78620

272 Acres FM 1660, Taylor TX

Wastewater



Wastewater Expansion

The Hutto Wastewater Treatment Plant (WWTP) lies just 3.8 miles west of the Hairston Tract. Future wastewater expansion corridors position this property for potential sewer access. Combined with existing Manville Water service, this tract is uniquely positioned for full-utility development. Properties with water and wastewater access consistently achieve premium pricing, and proximity to the WWTP strengthens its case.

Contact For More Information:
Josh Smith (512) 394-2659
jsmith@triplelrealty.com

Triple L Realty - Keller Williams
333 US 290, #300
Dripping Springs, TX 78620